



LAWRENCE COUNTY  
**WHOLE CHILD**



# RESOURCE GUIDE

**SERVING THE NEEDS OF ALL CHILDREN  
IN LAWRENCE COUNTY, OHIO**

WHOLE Child is a joint initiative of the  
Lawrence County Commissioners and  
Lawrence County Children Services.





## Commissioners' Introduction



### Lawrence County Commissioners

**Dr. Colton Copley**

**DeAnna Holliday**

**Michael Finley**

### A letter from the Lawrence County Commission:

By establishing the Whole Child Initiative in Lawrence County, we aim to improve the quality of life for our youth and to supply bountiful resources that foster youth empowerment. We know that when youth are supported with programs and resources, they have the power to shift community culture, to lead their communities to new heights, and to become all that they can be.

Lawrence County is rich with resources and people who share a common vision for our youth. The Whole Child Initiative creates a platform for government, educational organizations, private organizations, and citizens to join forces to build a solid foundation of support for our youth.

We believe that our youth are capable of incredible things. Our goal is to expose them to opportunities, provide them with tools and knowledge to make good decisions for themselves, and inspire them to do incredible things.

We are determined to build confidence in the next generation of leaders. We want them to be active contributors and collaborators who are motivated to make their impact on the world around them.

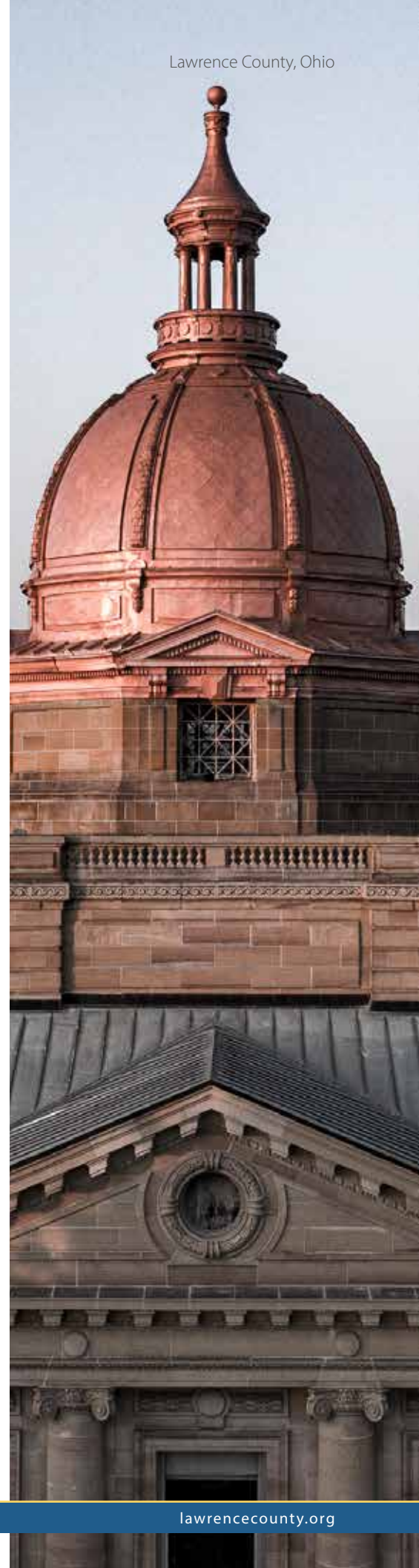
We are hopeful that this resource guide will provide you with useful knowledge of services and resources to impact the lives of your children and those around you.

Best regards,

**DeAnna Holliday**

Lawrence County Commissioner

**"When we come together with ideas and open minds, we can create a greater community. Our children deserve a community that focuses on the development of their individual capacity."**





# Call-For-Help Reference Guide

A trained professional is often required to solve urgent or life-threatening situations. A quick phone call for help may save a life. Report an accident, fire, serious illness, injury, or crime that requires immediate response.

**740-532-1176**

**24-hour Lawrence County  
Children Services Abuse Hotline**

**740-532-3324 ext. 6341**

**Non-Emergency Lawrence County  
Children Services Line**

**DIAL 9-1-1**

**Fire, Police or Medical Emergencies**

**740-533-7334**

**Impact Prevention (Handle With Care)**

**9-8-8 Emotional Health Lifeline**

**Call, Text, or Chat 988**

**1-800-222-1222**

**Poison Control Center**

**1-800-RUNAWAY**

**National Runaway Crisis Center**

**1-800-656-4673**

**National Sexual Abuse Hotline**

**1-800-273-TALK**

**Teen Suicide Prevention Hotline**

**1-800-273-8255**

**National Suicide Prevention Lifeline**

**1-800-843-5678**

**National Center for Missing  
and Exploited Children**

## Lawrence County Services

**740-532-3525**

**Lawrence County Sheriff (Non-Emergency)**

**740-532-3324**

**Lawrence County DJFS Children Services**

**740-532-3962**

**Lawrence County Health Department**

**740-533-4343**

**Lawrence County Probate Court-Juvenile Division**





# Table of Contents

Commissioner's Introduction	2
Call-For- Help Reference Guide	3
Table Of Contents	4
The Whole Child Initiative	5
Lawrence County Children Services	7
Department of Job and Family Services	8
Adoption & Foster Care	9
Kinship Care, Homeless Services, and Shelter Information	10
Social Services and Support Organizations	11
Project Lifesaver	14
Community Health Centers	15
Hospitals	17
Childcare Services	19
Child Care Providers	20
Education	22
Libraries	24
Job Training and Search	25
Social Security	26
Food Pantries	27
Women, Infants, and Children (WIC)	29
Affordable Housing	30
Local Churches	31
Legal Services and Glossary of Terms	34







## The WHOLE Child Initiative

The WHOLE Child Initiative is proud to make available the Lawrence County WHOLE Child Resource Guide. The Lawrence County WHOLE Child Initiative works hand in hand with Lawrence County Children Services, a division of Lawrence County Job & Family Services. This guide serves as only one of many avenues that the agency has implemented to demonstrate our commitment to protecting children by strengthening families.

The well-being of our children and the support of their families are the most important measures of a community's quality of life. It is our hope that this Resource Guide serves as a convenient tool for accessing vital information, services, and programs that will help benefit children and families throughout the community.



LAWRENCE COUNTY  
**WHOLE CHILD**

### MISSION

*The Mission of the Lawrence County WHOLE Child Initiative is to ensure all Lawrence County youth service organizations work in unison to protect, educate and empower the youth of Lawrence County Ohio.*

### VISION

*The Lawrence County WHOLE Child Initiative will be known for its ability to communicate with all county services to ensure our area youth have the available education, physical/mental/spiritual wellness, and protective resources essential to building a strong future.*

## CORE VALUES

### WISDOM:

The Lawrence County WHOLE Child Initiative will always be conscious to take every opportunity to invest in the youth of Lawrence County so they may achieve life-long enrichment.

### HEALTH:

The Lawrence County WHOLE Child Initiative will work to ensure every youth in Lawrence County is provided with social, emotional and physical resources essential to live a healthy lifestyle.

### OPTIMISUM:

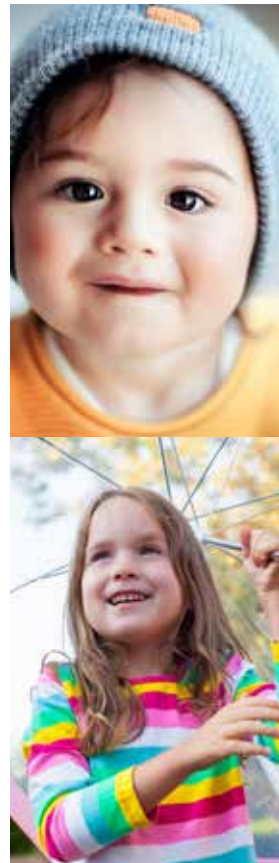
The Lawrence County WHOLE Child Initiative will work to ensure the Lawrence County youth become empowered with optimistic goals essential for success.

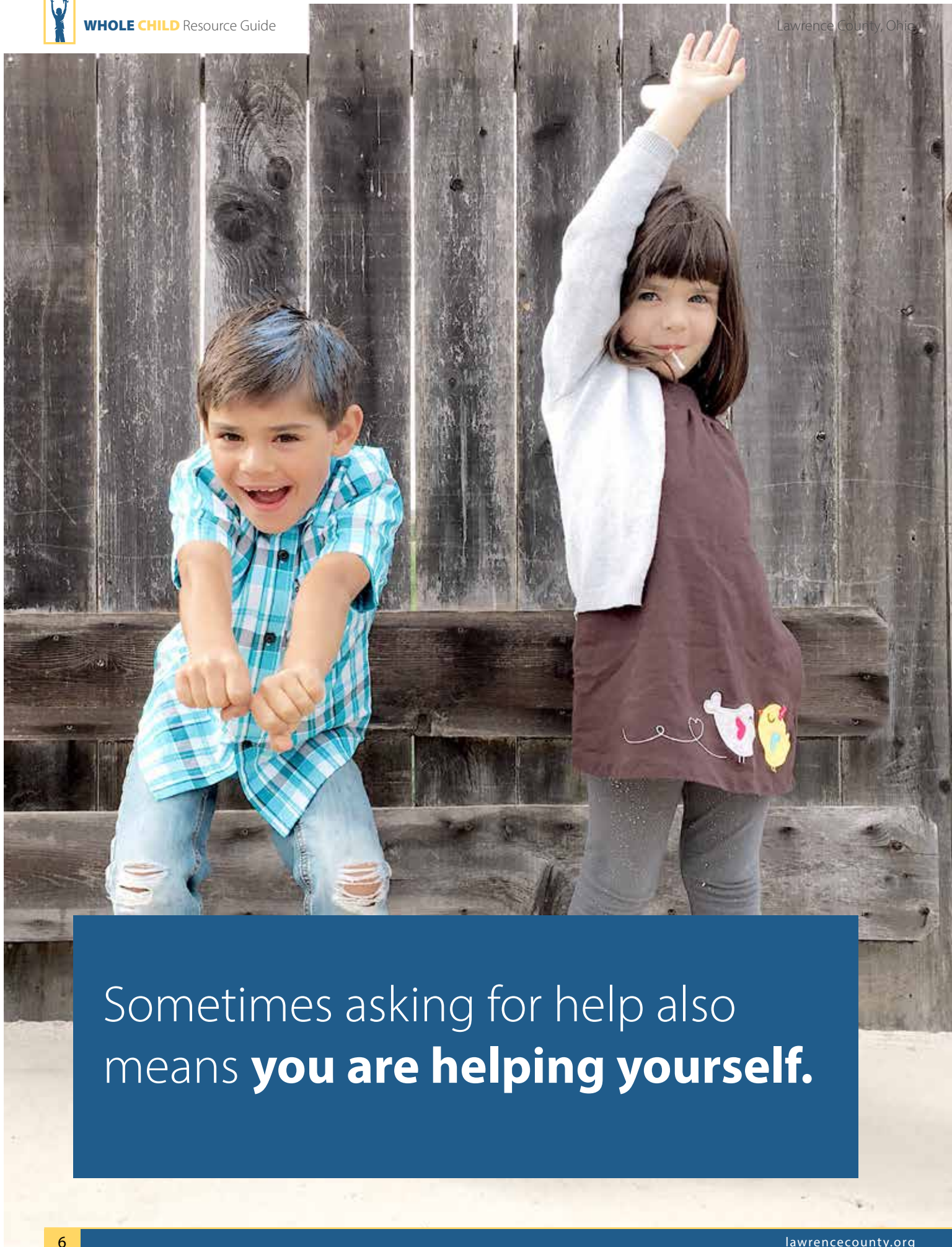
### LEADERSHIP:

The Lawrence County WHOLE Child Initiative will work to provide resources that will support Lawrence County youth in obtaining leadership skills essential to become leaders.

### EMPOWERMENT:

The Lawrence County WHOLE Child Initiative will work to ensure the youth of Lawrence County are empowered with the necessary tools needed to develop a successful future.





Sometimes asking for help also  
means **you are helping yourself.**



# LAWRENCE COUNTY CHILDREN SERVICES



**Missy Evans, M.Ed.**

Lawrence County DJFS Director

**“We live in a world in which we need to share responsibility. It’s easy to say, “It’s not my child, not my community, not my world, not my problem.” Then there are those who see the need and respond. I consider those people my heroes.”**  
**- Fred Rogers**

Children Services is the public agency mandated by federal and state laws to protect children from abuse and neglect. By being in partnership with various agencies and organizations, and with the help of resolute employees, kinship caregivers, adoptive families, and community foster parents, the agency is committed to making sure that every child has a safe and stable home.

Each year, Lawrence County Children Services serves children and their families through prevention, protection, placement, and permanency programs. The agency protects and cares for children in cooperation with parents whenever possible, by providing services to alleviate the problems that led the family to the attention of Children Services.

**These services include:**

IN-HOME CASE  
MANAGEMENT

YOUTH TRANSITION  
SERVICES

KINSHIP PLACEMENT  
AND SUPPORT

PLACEMENT OF  
CHILDREN IN  
TEMPORARY FOSTER  
HOMES THROUGH  
PARTNER AGENCIES

Support services  
enabling parents or  
caregivers to maintain  
or resume their role of  
raising their children

When parents are still unable to care for their children, Children Services petitions the court for permanent custody and places children in adoptive homes.

- Adoption placement services, adoption assistance and other subsidies.

Lawrence County Children Services is housed within the Department of Job and Family Services. Children Services is regulated by statutory mandates of the state and federal governments and regulations of the Ohio Department of Children and Youth. Lawrence County Children Services meets rigorous standards regarding quality of services and sound management practices.

**THE AGENCY IS COMMITTED TO MAKING SURE THAT EVERY CHILD HAS A SAFE AND STABLE HOME**





# Lawrence County Department of Job and Family Services



## DJFS Main Office

1100 South 7th Street  
Ironton Ohio 45638

Hours: 8am to 4:30pm  
Monday - Friday

Phone: (740) 532-3324

Toll Free: 800-510-4443

Fax: (740) 534-9072

TTY/TTD: (740) 532-3080

Child Support Enforcement Agency: (740) 533-4338

## 24-hour Lawrence County Child Services Hotline (740) 532-1176

### Services Provided:

Food Assistance-SNAP

Health Assistance/Medicaid

Childcare Assistance

PRC Work Supports

Transportation Assistance

Child Support

Cash Assistance-TANF

Health Check & Pregnancy Services

### Social Services:

Children Services

Child Abuse

Kinship Care

Adoption & Foster Care

Adult Protective Services

## Ohio Benefits Information Line - 844-640-OHIO (6446)

Applicants & Recipients can call the above number to get the status of their Cash, Food and Medical Assistance Benefits.

1. Dial the number and choose your language
2. Then select option 2 and enter zip code
3. Then select option 1 and enter personal identifying information.

Once all information is entered, the individual can select an option to receive the status of benefits, the monthly issuance amount that is approved and sign up for text alerts, etc.



Visit us on Facebook - Lawrence County  
Department of Job and Family Services

[www.lawrencecountydjfs.com](http://www.lawrencecountydjfs.com)





## Adoption & Foster Care

Lawrence County Children Services depends on special families to open their hearts and homes to provide temporary and permanent care.

When children are removed from their homes, temporarily or permanently, as the result of child abuse, neglect or other unsafe conditions, Lawrence County Children Services calls on foster and adoptive families to provide the children safe, loving homes. Foster families care for children temporarily while Lawrence County Children Services works with the children's birth families to resolve issues. When children must be removed permanent-ly from their homes, adoptive families provide a new, permanent, nurturing home.

Homes are needed for children of all ages. There is always a critical need of homes for teens, sibling groups, emergency care homes, and foster families who will also consider adop-tion of children of all ages. Foster par-ents work together with the casework-er to meet the needs of the child placed in their home.

Lawrence County has approximately **75 children** in temporary custody



**Necco Center**  
115 Private Road 977  
Pedro, OH 45659

### FOSTER CARE

Phone: 1(740) 534-1386  
Fax: 1(740) 534-1497  
[www.necco.org](http://www.necco.org)



**Necco South Point**  
178 Private Road 19423  
South Point, OH 45680

### FOSTER CARE

Phone: 1(740) 263-2626  
Fax: 1(740) 894-1132  
[www.necco.org](http://www.necco.org)



**Necco Behavioral Health**  
1404 Race St Unit 302  
Cincinnati, OH 45202  
Phone: 1(844) NeccoBH  
[www.necco.org](http://www.necco.org)



**Stepping Stones - Ironton**  
901 Park Avenue  
Ironton, OH 45638

**FOSTER CARE & COUNSELING**  
Phone: (740) 534-1075  
[www.stepstoneyouth.com](http://www.stepstoneyouth.com)



## Kinship Care

Kinship Care refers to a temporary or permanent arrangement in which a relative or any non-relative adult who has a long-standing relationship or bond with the child and/or family, has taken over the full-time, substitute care of a child whose parents are unable or unwilling to do so. Kinship Care includes those relationships established through an informal arrangement, legal custody or guardianship order, a relative foster care placement or kinship adoption. Regardless of the type of kinship care arrangement, the kinship caregivers' voluntary commitment to devote their lives to the children in their care is a courageous, life-changing decision.

Kinship care represents the most desirable out-of-home placement option for children who cannot live with their parents. It offers the greatest level of stability by allowing children to maintain their sense of belonging and enhances their ability to identify with their family's culture and traditions.



**Ohio Kinship and  
Adoption Navigator  
Program:**

**1 (844) OHIO-KAN**

[OHIOKAN.JFS.OHIO.GOV](http://OHIOKAN.JFS.OHIO.GOV)

[Grandfamilies.org](http://Grandfamilies.org)

Ohio Grandparent/Kinship Coalition

## HOMELESS PROGRAMS AND SHELTERS

### Homeless Crisis Response Program (HCRP)

The Homeless Crisis Response Program (HCRP) helps individuals and families break free from homelessness by rapidly moving them from shelters or the streets into permanent housing. It supports those who would likely remain homeless without help, offering assistance to find affordable housing and increase self-sufficiency.

Participation in case management is required to receive support. HCRP does not offer long-term rent or mortgage assistance and is not meant for those needing ongoing or intensive services. The program's goal is to promote housing stability. Each household receives case management to identify needs, secure safe housing, and create a plan to connect with resources for long-term stability.



### Homeless Crisis Response

120 North 3rd Street  
Ironton, OH

**740-532-3140**

[www.ilcao.org](http://www.ilcao.org)

## LOCAL AREA SHELTERS

### IRONTON CITY MISSION

710 North 5th Street  
Ironton, OH

**740-532-5041**

### HUNTINGTON CITY MISSION

624 10th Street.  
Huntington, WV

**304-523-0293**

### SCIOTO COUNTY HOMELESS SHELTER

615 8th Street  
Portsmouth, OH

**740-353-4058**

### SALVATION ARMY

2212 Carter Avenue  
Ashland, KY

**606-324-5751**

**606-329-2874**

\*call for current status & policies



## SOCIAL SERVICE & SUPPORT ORGANIZATIONS

### Ironton-Lawrence County Community Action Organization

If you are in need of any of the services provided by the Community Action Organization, all you have to do is call or visit the CAO One-Stop Center and a case manager will be able to get you connected with department best able to help you.

You can also visit their website to learn more about a specific department or program and contact that program directly.



#### Community Action One-Stop Center

120 N 3rd Street  
Ironton, Ohio 45638

Phone: 740-532-3140

### Available Programs and Departments:

#### Family Medical Centers

(Pediatrics, Primary Care, Dental, Behavioral Health, Healthcare for the Homeless, WIC)

#### Early Childhood Academy

(Center-based Childcare, Family Childcare, Home Visits, Early Head Start, Head Start, Early Childhood Education)

#### Community Services & Development

Community & Economic Development

Community Services (CSBG)

#### Empowering Services

Workforce Training & Development Programs

Home Energy Assistance Program (HEAP)

Senior Services

Housing Management / Affordable housing

Homeless Services

Home Weatherization (HWAP)

#### Transportation

OVC SHUTTLE

[lawrencecountytransit.com](http://lawrencecountytransit.com)

[www.ilcao.org](http://www.ilcao.org)



#### United Way of the River Cities

Make 2-1-1 your first call when you have a question, problem or don't know where to turn.

**24 Hours-Every Day 2-1-1**

**Phone: 304-523-8929**

820 Madison Avenue  
Huntington, WV 25704

#### **Services Offered:**

Food | Shelter | Housing  
Employment | Counseling  
Healthcare & More



#### Two Hearts Pregnancy Center

A place for women experiencing an unplanned pregnancy to find compassionate help and confidential support.

**Phone: 740-532-7654**

207 Marion Pike  
Coal Grove, Ohio 45638

[www.pregnancydecisionline.org](http://www.pregnancydecisionline.org)

[www.twoheartspcc.org](http://www.twoheartspcc.org)



#### Appalachian Family & Children First Council

The AFCFC includes families and people from local agencies and community organizations in Lawrence County to improve the well-being of children and families.

#### **AFCFC Coordinator**

604 Carlton Davidson Lane  
Coal Grove, Ohio 45638

**Phone: (740) 377-5612**

[www.fcf.ohio.gov](http://www.fcf.ohio.gov)





## SOCIAL SERVICE & SUPPORT ORGANIZATIONS



COAD4kids is a child care resource and referral agency serving clients of all income levels. We:

- Help families find child care and resources
- Work to increase the child care availability
- Train early childhood professionals
- Offer technical assistance to classroom teachers and program administrators
- Assist individuals become foster/ adoptive parents

**Phone: 740-594-8499**

**[coadinc.org/coad4kids](http://coadinc.org/coad4kids)**

### HANDLE WITH CARE

In Lawrence County if a law enforcement officer or any other first responder encounters a child during a traumatic event we have a procedure in place in order for that child's name and three words only, HANDLE WITH CARE, to be forwarded to their re-spective school before the school bell rings the next day. The school then implements individual, class, and whole school trauma-sensitive approaches so that traumatized children are "Handled With Care". This is so important to give the school staff a heads-up that the child has faced a traumatic event and can be offered care over consequences.

Any Questions can be sent to our Lawrence County Handle With Care Coordinator,

**Eddie Neel**

**[eddie@impactprevention.org](mailto:eddie@impactprevention.org)**

For more information visit:

**[www.handlewithcareoh.org](http://www.handlewithcareoh.org)**



OhioRISE expands in-home and community-based behavioral-health services so children with complex needs can stay with their families.

**[managedcare.medicaid.ohio.gov](http://managedcare.medicaid.ohio.gov)**



We seek to support, empower, and provide high quality resources to our disabled community in a safe and secure environment.

**Phone: 740-891-4263**

**[tristatedevelopmentalservices.org](http://tristatedevelopmentalservices.org)**



**AUTISM SERVICES CENTER**

**Phone: 740-377-9029**

1749 County Rd 1  
South Point, OH 45680

**LAWRENCE COUNTY AUTISM PROJECT**  
**email:**

**[Lawrencecountyautismproject@gmail.com](mailto:Lawrencecountyautismproject@gmail.com)**



Hope's Place is a victim-focused, children's advocacy center that provides a safe atmosphere, lessens trauma and promotes healing by maximizing services through a multi-disciplinary team approach for child victims of sexual abuse.

**Phone: 606-325-4737**

1100 Greenup Avenue  
Ashland, KY 41101  
**[www.hopesplace.org](http://www.hopesplace.org)**



Ohio BRIDGES is a completely voluntary program designed to promote permanency and self-sufficiency. BRIDGES extends funds for housing and case management for eligible young adults who emancipate out of custody between the ages of 18 and 20 years old.

**Southeast Region**

**Phone: 614-869-3889**

Serving Lawrence County, Ohio  
**[se.region@cfhcoho.org](mailto:se.region@cfhcoho.org)**



Chapter President,  
Larry Pernesetti

**Phone: 740-534-9128**

**[nwtf.org](http://nwtf.org)**

**Phone: 740-646-6907**



Special Needs  
Youth Sportsmen

**Phone: 740-646-6590**

**[SpecialNeedsYouthSportsmen.org](http://SpecialNeedsYouthSportsmen.org)**



**CHANGING PERSPECTIVES.  
CHANGING LIVES.**

1557 Winchester Ave, Suite 204  
Ashland, KY 41105  
**[enrollment@bbbstristate.org](mailto:enrollment@bbbstristate.org)**  
**304.459.9876**  
**[www.bbbstristate.org](http://www.bbbstristate.org)**





We are a substance abuse prevention/mental health promotion nonprofit here in Lawrence County with a vision of "Healthy People, Healthy Communities"

Some of our programs include:

### Youth-led Prevention



Local youth, in collaboration with Impact Prevention staff, dive into data collected in the Ohio Healthy Youth Environments Survey to identify a problem of practice and begin strategic planning to make an IMPACT on this issue. Examples include improving mental health, promoting positive social norms for underage drinking, and reducing vaping. Currently, there are eight IMPACT teams in Lawrence County and three in Scioto County. In each county, representatives from the schools come together to form a county-wide youth council that works to create community-level change and collaboration in our area. For more information, contact Mollie Stevens: [Mollie@ImpactPrevention.org](mailto:Mollie@ImpactPrevention.org)

### Youth Empowerment Activities Afterschool

During the months of August to May, Impact has YEA Afterschool, which gives students living in the Ironton Metropolitan Housing Authority a safe place to go to receive homework help, healthy snacks, social skills building, and positive adult and youth role models.



### Botvin Lifeskills Training

Botvin Lifeskills® Training (LST) is a research-validated substance abuse prevention program proven to reduce the risks of alcohol, tobacco, drug abuse, and violence by targeting the major social and psychological factors that promote the initiation of substance use and other risky behaviors. This program provides adolescents and young teens with the skills necessary to successfully handle challenging situations. For more information, contact Eddie Neel: [Eddie@ImpactPrevention.org](mailto:Eddie@ImpactPrevention.org)



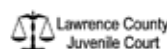
### Question, Persuade, Refer Suicide Prevention Gatekeeper Training

Question, Persuade, Refer (QPR) which teaches the signs of suicidality and proper response, using trauma-informed approaches & language. This is an excellent, evidence-based program that is recommended by the CDC as a strategy to prevent suicide in communities. Impact Prevention provides this training in-school and to community partners. For more info, contact Meagan Joseph: [Meagan@impactprevention.org](mailto:Meagan@impactprevention.org).



For more information, go to: [ImpactPrevention.org](http://ImpactPrevention.org)  
[Facebook.com/ImpactPrevention](https://Facebook.com/ImpactPrevention)

Our programs are generously sponsored by:





## Project Lifesaver

The Lawrence County Sheriff's Office added Project Lifesaver to their agency in 2008, providing a peace of mind to families and law enforcement. Project Lifesaver is a very valuable tool for our agency and our county for adults and children with autism, brain injury, dementia, Alzheimer's, etc. Project Lifesaver is located in 48 states, six Provinces in Canada, and Australia. If our client travels to any of these locations their local law enforcement will be able to track the client should they wonder off with their assigned frequency number. Each medically challenged person is assigned a bracelet that is equipped with a sixdigit number that only they have. A person will wear the same bracelet until it is worn out, or they leave the program. When a client no longer needs their bracelet, it goes back into our inventory and placed on another client.

This program is funded either from the family or local businesses or charities. We have an account with PLS where all monies are deposited, and equipment comes from that account. 100% of all donations go right back into products for Project Lifesaver. Each new bracelet runs close to \$385 with batteries and bands to last the year. Each bracelet will have a battery change every month with some being 60-day bracelets.

We currently have 21 clients that are active. Over the last 16 years we have helped over 80 families.



### Project Lifesaver

If your organization would like us to come and speak about our program or if you would like to donate to this cause please contact:

**Nancy Huff or Sargent Scott Wilson**  
740-532-3106 or 740-532-3525

e-mail: [lcso53@yahoo.com](mailto:lcso53@yahoo.com)

By forming partnerships with local law enforcement and public safety organizations, Project Lifesaver deploys specially trained teams with the most reliable technology available to quickly locate and return wandering adults and children to their families and caregivers. We currently have 14 trained members on our team.

Project Lifesaver originally began in 1999 by the Chesapeake Sheriff's Office, Chesapeake, Virginia as a search and rescue operation, based on the need to find missing Alzheimer's victims. Later expanded to finding children with Autism, and Down Syndrome. There are an estimated 5 million persons in the United States with Alzheimer's and by 2030, there will be an estimated 15 million.

Our primary mission is to locate and rescue missing persons. By the Lawrence County Sheriff's Office joining forces with Project Lifesaver it is our goal to help save money and time for taxpayers, strengthen the awareness of our technologies service and to BRING YOUR LOVE ONES HOME.

We currently have people on a waiting list for additional bracelets that will be purchased with donations. If your organization would like us to come and speak about our program or if you would like to donate to this cause, please contact Nancy Huff or Sargent Scott Wilson @ 740-532-3106 or 740-532-3525 or e-mail [lcso53@yahoo.com](mailto:lcso53@yahoo.com).





## COMMUNITY HEALTH CENTERS

Serving the Medical Needs  
of Lawrence County Children



**Aid Family Medical Center**  
13804 St Rt 141 Kitts Hill, OH

**Phone: 740-643-2082**

**Services Offered:**

Family Practice

**FamilyMedicalCenters.org**



**Chesapeake Family Medical Center**  
717 3rd Ave. Chesapeake, OH

**Phone: 740-867-6687**

**Services Offered:**

Family Practice | Pediatrics

Behavioral Health

**FamilyMedicalCenters.org**



**Ironton Family Medical Center  
Healthcare Campus**

1408 Campbell Drive Ironton, OH

**Phone: 740-534-9202**

**Services Offered:**

Family Practice | Pediatrics

Dental Care | Behavioral Health

**FamilyMedicalCenters.org**



**Nancy's Place  
Family Medical Center**  
115 North 3rd Street Ironton, OH

**Phone: 740-302-1777**

**Services Offered:**

Family Practice | Pediatrics

Women's Health | Behavioral Health

**FamilyMedicalCenters.org**



**CAO One-Stop  
Family Medical Center**  
120 North 3rd St. Ironton, OH

**Phone: 740-532-3140**

**Services Offered:**

Family Practice | Behavioral Health

**FamilyMedicalCenters.org**



**South Point  
Family Medical Center**  
55 Township Rd. 508 E  
South Point, OH

**Phone: 740-377-2712**

**Services Offered:** Family Practice

Pediatrics | Behavioral Health

**FamilyMedicalCenters.org**



**Proctorville  
Family Medical Center**  
10777 County Rd. 107  
Proctorville, OH

**Phone: 740-643-2082**

**Services Offered:**

Family Practice | Pediatrics

Dental Care | Behavioral Health

**FamilyMedicalCenters.org**



**Rock Hill  
Family Medical Center**  
Rock Hill High School Campus  
2325C Co. Rd. 26 Ironton, OH

**Phone: 740-643-8688**

**Services Offered:**

Family Practice | Dental Care

Behavioral Health

**FamilyMedicalCenters.org**



**Holzer-Proctorville**  
98 State Street Proctorville, OH  
**Phone: 740-886-9370**

**Services Offered:**

Women's Health | Primary Care | Audiology

Lab Services | Rheumatology | Neurology

Ear, Nose and Throat | Sleep Medicine

Physical Medicine and Rehabilitation

**www.holzer.org**



## LAWRENCE COUNTY HEALTH DEPARTMENT

The Lawrence County Health Department is committed to monitoring community health status, identifying and addressing public health threats, enforcing laws that protect the public health, as well as providing services to prevent and control diseases.

Lawrence County residents will enjoy improved quality of life because of Lawrence County Health Department's dedication to health promotion, health education, disease prevention, and environmental health protection.

### Our Location

2122 South 8th Street  
Ironton, OH 45638

**Phone: 740-532-3962**

Hours of Operation  
for All Departments:  
M-F: 8:00 AM - 4:00 PM EST

### Emergency Numbers:

To report a public health emergency after-hours, please call 740-532-3962.

Callers will be provided numbers for staff who are available to provide 24/7 assistance.

For more information visit:  
**[www.lawcohd.org](http://www.lawcohd.org)**

## COMMUNITY HEALTH CENTERS

**ACA Exchange and Medicaid Health Insurance Companies Covering Lawrence County, Ohio:**

**CARESOURCE HEALTH: 800-448-0134**

**MOLINA HEALTH CARE: 866-642-9279**



**Kings Daughters  
Family Care Center**  
384 County Road 120 S  
South Point, OH

**Phone: 740-894-2080**

#### Services Offered:

Urgent Care | Family Medicine  
General Practice

**[www.kingsdaughtershealth.com](http://www.kingsdaughtershealth.com)**



**Kings Daughters  
Family Care Center**  
912 Park Ave.  
Ironton, OH

**Phone: 740-532-1100**

#### Services Offered:

Urgent Care | Family Medicine  
General Practice

**[www.kingsdaughtershealth.com](http://www.kingsdaughtershealth.com)**



**Valley Health Coal Grove**  
205 Marion Pike Coal Grove, OH

**Phone: 740-532-1188**

#### Services Offered:

Family Medicine | OB/GYN  
Pediatrics | Behavioral Health

**[valleyhealth.org](http://valleyhealth.org)**



**Valley Health Coal Grove**  
205 Marion Pike Coal Grove, OH

**Phone: 740-532-1188**

#### Services Offered:

Family Medicine | OB/GYN  
Pediatrics | Behavioral Health

**[valleyhealth.org](http://valleyhealth.org)**





## LOCAL HOSPITALS

Serving the Medical Needs  
of Lawrence County Families and Children



Member of MOUNTAIN HEALTH NETWORK

CABELL HUNTINGTON HOSPITAL

1340 Hal Greer Blvd.

Huntington, WV

**Phone: 304-526-2000**

**Services Offered:**

Full Service Hospital

[cabellhuntington.org](http://cabellhuntington.org)



ST MARY'S MEDICAL CENTER ER  
1408 Campbell Drive Ironton, OH

**Phone: 740-533-9710**

ST MARY'S MEDICAL CENTER

2900 1st Avenue Huntington, WV

**Phone: 304-526-1234**

[www.st-marys.org](http://www.st-marys.org)



UK King's Daughters

617 23rd Street Ashland, KY

**Phone: 606-408-4000**

**Services Offered:**

Full Service Hospital

[kingsdaughtershealth.com](http://kingsdaughtershealth.com)



*Very Good things are happening here*

SOUTHERN OHIO MEDICAL CENTER

1805 27th Street Portsmouth, OH

**Phone: 740-356-5000**

**Services Offered:**

Full Service Hospital

[www.somc.org](http://www.somc.org)



## MEDICAL SPECIALISTS



CINCINNATI CHILDRENS  
HOSPITAL

3333 Burnet Avenue

Cincinnati, OH

**Phone: 513-636-4200**

**Services Offered:**

Full Service Pediatric Hospital

[www.cincinnatichildrens.org](http://www.cincinnatichildrens.org)



NATIONWIDE CHILDREN'S  
HOSPITAL

700 Children's Drive

Columbus, OH

**Phone: 740-643-8688**

**Services Offered:**

Full Service Pediatric Hospital

[www.nationwidechildrens.org](http://www.nationwidechildrens.org)



UNIVERSITY OF KENTUCKY  
CHILDREN'S HOSPITAL

800 Rose Street Fourth Floor

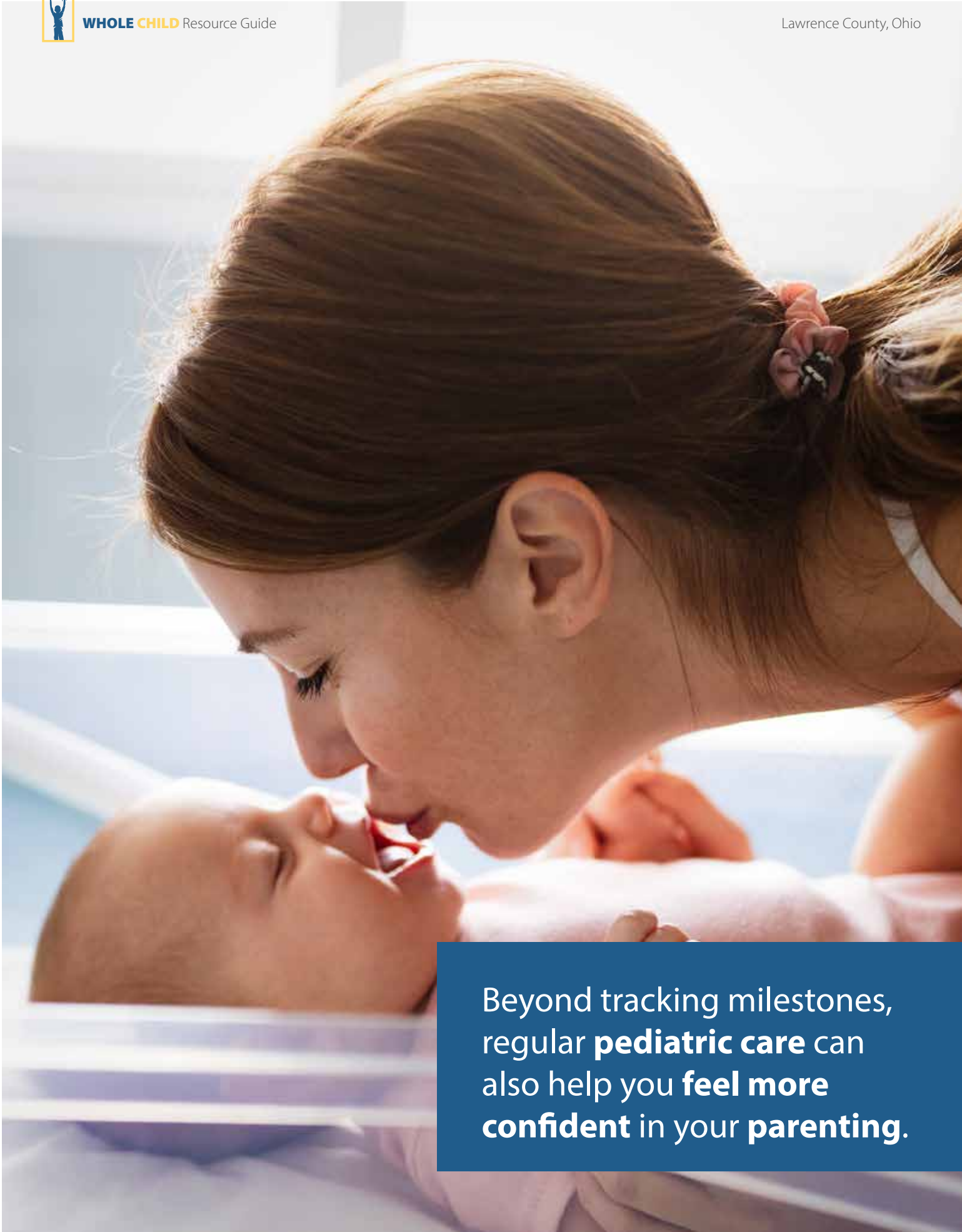
Lexington, KY

**Phone: 859-323-5000**

**Services Offered:**

Full Service Pediatric Hospital

[ukhealthcare.uky.edu](http://ukhealthcare.uky.edu)



Beyond tracking milestones, regular **pediatric care** can also help you **feel more confident** in your **parenting**.



# Childcare Services

## What Are the Benefits of a Licensed Program?

A licensed program can provide a caretaker and child with regulated, quality care through state and federal requirements monitored by ODJFS, ODE or the ACA for compliance. This can include health and safety, staff Professional Development training, CPR and First Aid, background checks, and additional monitoring inspections, as needed. In addition, children can receive additional early learning supports through the participation of licensed programs in Ohio's 5-star Quality Rating and Improvement System, Step Up To Quality. Step Up To Quality recognizes learning and development programs that exceed licensing health and safety standards, family and community engagement, health promotion, staff professional development, and child development standards



An unlicensed program is a program that is not monitored by any entity and is not required to meet any standards of safety, health, staffing, or early learning.

### Unlicensed programs can include:

- Care provided in a child's own home;
- Programs which operate two weeks or less a year;
- Programs where parents remain on the premises
- Programs offering specialized training in specific subjects, such as art, drama, dance, swimming, etc.



Childcare Assistance

To obtain the most recent list of licensed childcare providers and information on Childcare Assistance Programs call:

**Lawrence County  
Jobs and Family Services:**

**Phone: 740-532-3324**  
(JoAnne Watts ext. 6324)

### Tips For Finding Childcare

1. Start early
2. Get informed and make a call
3. Visit and ask questions
4. Make a choice



OHIO Early Intervention

### OHIO Early Intervention - Growing Possibilities

**Lawrence County  
Developmental Disabilities**

**Early Intervention, Preschool,  
and School Age Service and  
Support Administration**

1749 Co. Rd. 1  
South Point, OH 45680

**Phone: 740-377-2356**







## Childcare Services

## Type A and B Childcare Providers

### TYPE B CHILD CARE:

Homes serving children through the publicly funded child-care program (1-6 children in providers personal home)

**BOGGS, KIMBERLY**  
(740) 377-3587

905 4TH STREET EAST  
SOUTH POINT  
45680

**CHILDERS, RHONDA**  
(740) 533-7041

311 HIGH STREET  
SOUTH POINT  
45680

**HALL, AMY**  
(740) 533-2475

72 PR 160 TR 294  
PEDRO  
45659

**MOORE, TRACY**  
(304) 942-5678

101 CEDAR COURT  
SOUTH POINT  
45680

**PLANTS, TRACI**  
(740) 377-2868 or (740) 646-5516

306 DELORES STREET  
SOUTH POINT  
45680

**JESSICA MURNAHAN**  
(740) 550-3381

2711 S 9TH ST  
IRONTON  
45638

**RANSBOTTOM, KIMBERLY**  
(304) 962-1438

1173 CO.RD 1 #48  
SOUTH POINT  
45680

**SARBIA, CHRISTINE**  
(740) 534-8101

306 PARK AVENUE  
SOUTH POINT  
45680

**MYERS, CASEY**  
(304) 840-3030

10002 STATE ROUTE 775  
SCOTTOWN  
45678

### TYPE A CHILD CARE:

7 to 12 children (4 to 12 if 4 children are under age 2 years of age) cared for in the provider's home.

**ALL NESTLED INN FCC**  
**STEPHANIE GENESEO**  
(740) 867-6427

142 TWP RD 158  
CHESAPEAKE  
45619

**LITTLE BLESSINGS DAYCARE**  
**AMY LISTER**  
(740) 840-8668

10038 ST RT 775  
SCOTTOWN  
45678

**SMALL MIRACLES**  
**VICKIE MULLINS**  
(740) 533-0101

410 SCIOTO AVE  
HANGING ROCK  
45638







## Childcare Services



### Lawrence County Early Childhood Academy Headstart and Daycare Services

[www.headstartworks.org](http://www.headstartworks.org)

#### CHESAPEAKE

311359 Co. Rd. 1  
Chesapeake

740-867-4700

#### DAWSON-BRYANT

#1 Hornet Lane  
Coal Grove

740-532-8258

#### COLLINS CAREER CENTER

11627 St. Rt .243  
Chesapeake

740-867-3893

#### IRONTON

305 N. 7th St.  
Ironton

740-532-2905

#### HANGING ROCK

300 Main St.  
Hanging Rock

740-532-0178

#### PROCTORVILLE

384 Twp. Rd. 1053  
Proctorville

740-886-0504

#### SYBENE

978 Co. Rd. 1  
South Point

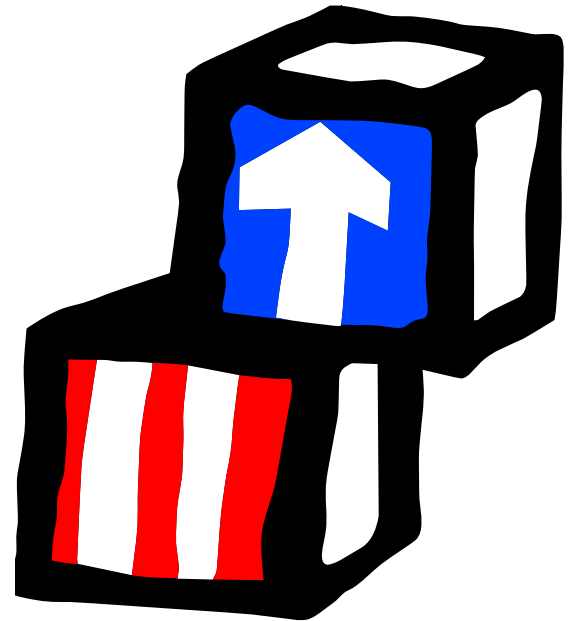
740-894-4100

#### SYBENE- SYMMES VALLEY

14860 St. Rt. 141  
Willow Wood

740-643-2690

## Headstart and Daycare Facilities



## Lawrence County Private Daycare Facilities

#### BRIGHT FUTURES

##### EARLY LEARNING CENTER

10509 COUNTY ROAD 1  
CHESAPEAKE, OH 45619

740-451-0558

#### KIDS ARE OUR FUTURE PRESCHOOL

47 Township Rd 509  
South Point

740-377-4200

#### LawCo DD Early Intervention

606 Carlton Davidson Lane  
Coal Grove

740-532-0406

#### KINDER KARE

627 Co. Rd. 411  
Proctorville

740-886-5014

#### TRISTATE BAPTIST DAYCARE CENTER

1300 Co. Rd. 60  
South Point

740-377-4739

#### WEE SHINE PRESCHOOL

86 Twp. Rd. 1056  
South Point

740-377-2356





## Education

### LAWRENCE COUNTY EDUCATIONAL SERVICE CENTER

304 North 2nd Street Ironton, OH

Phone: 740-532-4223 ext. 228

[www.lawrencecountyesc.com](http://www.lawrencecountyesc.com)



The Lawrence County Educational Service Center furnishes leadership and consulting services designed to strengthen local districts in areas they are unable to finance or staff independently. Children, parents, teachers, administrators, boards of education and other receive these services directly and indirectly.



**Eric Floyd**

ESC Superintendent

#### A MESSAGE FROM THE LAWRENCE COUNTY EDUCATIONAL SERVICE CENTER SUPERINTENDENT:

As Superintendent of the Lawrence County Educational Service Center, allow me to welcome you to our website. I hope you will take time to explore the website and services we provide. Our Educational Service Center exists to provide student centered educational leadership and supportive services to meet the individual and collective needs of the staff, students, and boards of education for all school districts located in Lawrence County. We are committed to:

- Providing essential services and support to the schools in our county
- Expanding collaboration and partnerships to support staff and students
- Continually demonstrating value in our work
- Highlighting the success of the staff and students at our partner schools

The highly trained and caring staff of the ESC stand ready to serve. Explore what the Lawrence County Educational Service Center can do for you or contact me directly to discuss any services or needs you might have.

Sincerely,

Eric Floyd, Lawrence County ESC Superintendent

Several Local School Districts in Lawrence County offer After School Programs through the 21st Century Learning Center grant. The purpose of before and after school programs are to provide quality out-of-school learning opportunities for students. The emphasis is to improve reading and mathematics achievement through additional instruction time, tutoring, and one on one learning.

Other advantages include homework help, physical activity, social engagement and a healthy after school snack. Contact your local district to see if the after school program is available to your student/family.

## LAWRENCE COUNTY LOCAL SCHOOL DISTRICTS



Chesapeake U.E. Village Schools

10183 Co Rd 1

Chesapeake, OH 45619

Phone: 740-867-3135

[www.peake.k12.oh.us](http://www.peake.k12.oh.us)



Collins Career & Technical Center

11627 OH-243

Chesapeake, OH 45619

Phone: 740-867-6641

[www.collins-cc.edu](http://www.collins-cc.edu)



Dawson Bryant Local Schools

701 High Street

Coal Grove, OH 45638

Phone: 740-532-6451

[www.db.k12.oh.us](http://www.db.k12.oh.us)



## LAWRENCE COUNTY LOCAL SCHOOL DISTRICTS



Fairland Local Schools  
228 Private Drive 10010  
Proctorville, OH 45669  
**Phone: 740-886-3100**  
[www.fairland.k12.oh.us](http://www.fairland.k12.oh.us)



Ironton Catholic Schools  
912 South 6th Street  
Ironton, OH 45638  
**Phone: 740-532-0485**  
[www.irontoncatholicschools.org](http://www.irontoncatholicschools.org)



Ironton City Schools  
105 South 5th Street  
Ironton, OH 45638  
**Phone: 740-532-4133**  
[www.tigertown.com](http://www.tigertown.com)



South Point Local Schools  
302 High Street  
South Point, OH 45680  
**Phone: 740-377-4315**  
[www.southpoint.k12.oh.us](http://www.southpoint.k12.oh.us)



Rock Hill Local Schools  
2325A County Rd 26  
Ironton, OH 45638  
**Phone: 740-532-7030**  
[www.rockhill.org](http://www.rockhill.org)



Symmes Valley Local Schools  
14778 OH-141  
Willow Wood, OH 45696  
**Phone: 740-643-245 1**  
[www.svlsc.com](http://www.svlsc.com)



Tri-State STEM+M  
Early College High School  
702 Solida Rd  
South Point, OH 45680  
**Phone: 740-377-4433**  
[www.tristatestem.com](http://www.tristatestem.com)



Open Door School  
606 Carlton Davidson Ln.  
Coal Grove, OH 45638  
**Phone: 740-532-7401**  
[www.lawrencedd.org](http://www.lawrencedd.org)



Sugar Creek Christian Academy  
94 County Rd. 44 South  
Ironton, OH 45638  
**Phone: 740-533-2215**  
[sugarcreekchristianacademy.com](http://sugarcreekchristianacademy.com)

Lawrence County ASPIRE (GED)  
11627 OH-243  
Chesapeake, OH 45619  
**Phone: 740-867-6641 ext. 442**  
[www.collins-cc.edu/ged](http://www.collins-cc.edu/ged)

**Please contact your local School District for more information about Youth League Sports & Extra Curricular Opportunities.**



## Public Libraries

# BRIGGS LAWRENCE COUNTY PUBLIC LIBRARY

## IRONTON BRANCH

321 South 4th Street  
Ironton, OH 45638

Phone: 740-532-1124

## PROCTORVILLE BRANCH

410 Elizabeth Street  
Proctorville, OH 45669

Phone: 740-886-6697

## SOUTH POINT BRANCH

317 Solida Rd.  
South Point, OH 45680

Phone: 740-377-2288

## SYMMES VALLEY BRANCH

14860 State Route 141  
Willow Wood, OH 45696

Phone: 740-643-2086

## CHESAPEAKE BRANCH

11054 County Rd. 1  
Chesapeake, OH 45619

Phone: 740-867-3390

## ADMINISTRATIVE OFFICES

PO Box 1116  
South Point, OH 45680

Phone: 740-533-0363

**PUBLIC COMPUTERS AND INTERNET AVAILABLE AT EACH LIBRARY LOCATION**

[www.briggslibrary.com](http://www.briggslibrary.com)



## DOLLY PARTON'S IMAGINATION LIBRARY & OHIO GOVERNOR'S IMAGINATION LIBRARY

Dolly Parton's Imagination Library is dedicated to inspiring a love of reading by gifting books free of charge to children from birth to age five, through funding shared by Dolly Parton and local community partners in the United States, Canada, United Kingdom, Australia and Republic of Ireland.

Inspired by her father's inability to read and write Dolly started her Imagination Library in 1995 for the children within her home county. Today, her program spans five countries and gifts over 1 million free books each month to children around the world.

**SIGN UP FOR THE FREE OHIO GOVERNOR'S IMAGINATION LIBRARY TODAY**

**FROM BIRTH THROUGH AGE 5, YOUR CHILD WILL RECEIVE:**

- Monthly delivery of an awesome book specially selected for your child's age.
- Increased vocabulary and literacy
- A love for learning that will help prepare them for kindergarten



[www.ohioimaginationlibrary.org](http://www.ohioimaginationlibrary.org)







## JOB AND TRAINING OPPORTUNITIES



**OhioMeansJobs®**

Lawrence County

A proud partner of the  
American Job Center network

### OHIO MEANS JOBS ONE-STOP CENTER

120 North 3rd Street  
Ironton, OH 45638

Phone: 740-532-3140

[www.omjlawrencecounty.org](http://www.omjlawrencecounty.org)



**COLLINS**  
CAREER TECHNICAL  
CENTER

### COLLINS CAREER TECHNICAL CENTER

11627 OH 243  
Chesapeake, OH 45619

Phone: 740-867-6641

[www.collins-cc.edu](http://www.collins-cc.edu)



### JOIN THE MILITARY

[usa.gov/join-military](http://usa.gov/join-military)

1-844-USA-GOV1 (1-844-872-4681)

**OHIO**  
UNIVERSITY  
Southern Campus

### OHIO UNIVERSITY SOUTHERN - IRONTON

1804 Liberty Avenue  
Ironton, OH 45638

Phone: 740-533-4600

### OHIO UNIVERSITY SOUTHERN - PROCTORVILLE CENTER

111 Private Drive 516  
Proctorville, OH 45669

Phone: 740-886-7655

[www.ohio.edu/southern](http://www.ohio.edu/southern)



### OPPORTUNITIES FOR OHIOANS WITH DISABILITIES (OOD)

Phone: 614-985-7918

[www.ood.ohio.gov](http://www.ood.ohio.gov)



### TRI-STATE BIBLE COLLEGE

506 Margaret Street  
South Point, OH 45680

Phone: 740-377-2520

[www.tsbc.edu](http://www.tsbc.edu)





# SOCIAL SECURITY ADMINISTRATION



## Ironton OH Social Security Office

611 Vernon Street  
Ironton, OH - 45638

### Phone

740-533-1068

### Fax

(833) 596-0579

### Instagram

<https://www.instagram.com/socialsecurity/>

### Web address

<http://www.ssa.gov/>

### Facebook

<https://www.facebook.com/socialsecurity>

### Twitter

<https://twitter.com/socialsecurity>

## Top Tips for Visiting This Office

**Make an Appointment** - Do not just show up at your social security office. Without an appointment, you will more than likely have a long wait.

**2. How to make an appointment** - Call 1-800-772-1213 (or a local office number if they have one) between 7 a.m. to 7 p.m., Monday through Friday. Call the phone number as early as possible or after 6pm. When the office is open, a representative will give you a call back. Set up your appointment.

**3. Bring Necessary Documentation** - When you are on the phone with the representative, make sure you ask them what forms you will need to bring to your appointment. This will prevent you from having to come back again if you forget your documentation. Here are some documents you may need to bring: US birth certificate, US passport, Social Security Card, etc

**4. Bring A List Of Questions You Need Answered** - This will make it easier for you to deal with a time constrained social security representative. Make sure all of your questions get answered.

**5. Arrive Early** - If you cannot make an appointment, the best way to be seen is to arrive at the office early. Arrive just before 9am.



# LAWRENCE COUNTY FOOD PANTRIES



## FOOD INSECURITY IN LAWRENCE COUNTY

The U.S. Department of Agriculture (USDA) defines food insecurity as a lack of consistent access to enough food for an active, healthy life ... many do not have the resources to meet their basic needs, challenges which increase a family's risk of food insecurity.

Nearly 18% of Lawrence County's population faces food insecurity, including 23% of the county's children.

PLEASE NOTE: Day and time of operations may change for each pantry, please call the phone number provided per listing as most pantries rely on volunteer workers.



## FOOD PANTRIES



### CENTRAL CHRISTIAN CHURCH

1541 South 7th Street  
Ironton, OH

**740-532-0681**

Food Pantry Hours:

Monday 10:00 am-12:00 pm

Wednesday 10:00 am-12:00 pm

\*special monthly delivery Facing  
Hunger Food Bank, call for  
details.



### HARVEST FOR THE HUNGRY

120 North 5th Street  
Ironton, OH

**740-532-9918**

Food Pantry Hours:

Monday 9:00 am-12:00 pm

Wednesday 9:00 am-12:00 pm

\*3rd Thursday of month 5pm-8pm

\*Closed on Federal Holidays



### IRONTON CHURCH OF CHRIST

2503 South 10th Street  
Ironton, OH

**740-532-3365**

Food Pantry Hours:

Thursday 9:00 am-11:00 am





# LAWRENCE COUNTY FOOD PANTRIES

## FOOD PANTRIES (CONTINUED)



**IRONTON CITY MISSION**  
710 North 5th Street  
Ironton, OH  
**740-532-5041**  
Food Pantry Hours:  
Tuesday 9:00 am-2:00 pm  
Thursday 9:00 am-2:00 pm



**ST. PAUL LUTHERAN CHURCH**  
612 Center Street  
Ironton, OH  
**877-704-3663**  
Food Pantry Hours:  
4th Thursday of each month  
11:00 am - 2:00 pm  
\*MUST REGISTER ONE WEEK IN ADVANCE



**IRONTON-LAWRENCE COUNTY  
COMMUNITY ACTION ORGANIZATION**  
Food Voucher Program  
120 North 3rd Street Ironton, OH  
**740-532-3140**  
\*call for more information



**SOUTH POINT UNITED METHODIST CHURCH**  
202 3rd Street East  
South Point, OH  
**740-377-4690**  
Food Pantry Hours:  
Last two Fridays of each month  
10:00 am-12:00 pm



**SOUTH POINT CHURCH OF CHRIST**  
402 3rd Street  
South Point, OH  
**740-377-4846**  
Food Pantry Hours:  
Last two Thursdays of each month  
10:00 am-12:00 pm



**MICHAEL'S GRACE PLACE**  
801 Hooper Drive  
South Point, OH  
**740-523-0501**  
Food Pantry Hours:  
Friday 10:00 am-2:00 pm



**NEW HOPE UNITED METHODIST**  
111 Twp. Rd. 1130  
Proctorville, OH  
**740-886-5311**  
Food Pantry Hours:  
2nd and 4th Monday of each  
month 10:00 am-2:00 pm



**ROME CHURCH OF CHRIST**  
86 Twp. Rd. 1056  
Proctorville, OH  
**740-886-6312**  
Food Pantry Hours:  
Monday 10:00 am-2:00 pm  
Tuesday 10:00 am-2:00 pm  
Wednesday 10:00 am-2:00 pm



**CHESAPEAKE COMMUNITY CENTER  
COMMUNITY MISSION OUTREACH  
FOOD PANTRY**  
3748 St. Rt. 7  
Chesapeake, OH  
**740-867-4532**  
Food Pantry Hours:  
Monday 1:00 pm-3:00 pm  
Thursday 10:00 am-12:00 pm  
1st Saturday of each month  
10:00 am-12:00 pm



**FACING HUNGER FOODBANK**  
1327 7th Avenue  
Huntington, WV 25701



**304-523-6029**  
Website lists locations and numbers:  
**facinghunger.org**



## LAWRENCE COUNTY WIC PROGRAM



**120 N 3rd ST  
Ironton, OH 45638  
740-532-2646 Ext. #3**

Food, nutrition counseling, breastfeeding counseling and access to health services are provided to eligible women, infants and children under the Special Supplemental Nutrition Program, popularly known as WIC. Studies completed since its inception show that WIC has been instrumental in the improvement of growth patterns of children, decreasing incidences of anemia and lowering infant mortality. With childhood and adult obesity on the rise, WIC strives to educate parents and caregivers about the importance of diet and exercise. It is now realized that a diet with healthy foods and healthy eating habits can have benefits that last throughout life.

### OHIO WIC PROGRAM INCOME GUIDELINES\*

Women, Infants & Children (WIC) Program-WIC is the Special Supplemental Nutrition Program for Women, Infants, and Children. WIC helps income eligible pregnant and breastfeeding women, women who recently had a baby, infants, and children up to five years of age who are at risk due to inadequate nutrition.

Gross income (before taxes) cannot exceed the following amounts:

Economic Unit	Annually	Monthly	Twice Monthly	Biweekly	Weekly
1	\$25,142	\$2,096	\$1,048	\$967	\$484
2	33,874	2,823	1,412	1,303	652
3	42,606	3,551	1,776	1,639	820
4	51,338	4,279	2,140	1,975	988
5	60,070	5,006	2,503	2,311	1,156
6	68,802	5,734	2,867	2,647	1,324
7	77,534	6,462	3,231	2,983	1,492
8	86,266	7,189	3,595	3,318	1,659

### Who is Eligible?

Eligibility for this service includes meeting income guidelines, a State residency requirement, and being individually determined to be at nutrition risk by a health professional. Income eligibility is based on gross income in the household. Currently, a family of four can earn \$45,510 per year. A person who participates or has family members who participate in certain other benefit services such as the Food Stamp Program, Medicaid, or Temporary Assistance for Needy Families, automatically meets the eligibility requirements.

***WIC's Mission: To safeguard the health of women, infants and children up to age 5 who are at nutrition risk by providing nutritious foods to supplement diets, information on healthy eating, and referrals to health care.***



## AFFORDABLE HOUSING



### IRONTON

#### **PARK AVENUE APTS (Senior Housing)**

201 Park Ave.  
Ironton, OH

**740-532-7820**

#### **ROOSEVELT APTS.**

321-323 S 5th St.  
Ironton, OH

**740-534-0375**

#### **SHERMAN THOMPSON TOWERS (Senior Housing)**

275 N 3rd St.  
Ironton, OH

**740-532-0694**

#### **STORMS CREEK APTS.**

1505 Lawrence St.  
Ironton, OH

**740-534-0375**

#### **10TH STREET APTS.**

511 S 10th St.  
Ironton, OH

**740-534-0375**

#### **IRONTON METROPOLITAN HOUSING**

720 Washington St.  
Ironton, OH

**740-532-8658**

### SOUTH POINT

#### **CHARLEY CREEK APTS.**

828 Pvt Dr. 2564  
South Point, OH

**304-638-7247**

#### **LAWRENCE COMMONS APTS.**

223 Twp Rd. 1186  
South Point, OH

**740-377-9327**

#### **LAWRENCE MANOR APTS.**

1035 Co Rd. 1  
South Point, OH

**740-377-4646**

#### **LAWRENCE VILLAGE APTS.**

1097 Co Rd. 1  
South Point, OH

**740-377-2085**

#### **POINT VILLAS**

Twp Rd. 268  
South Point, OH

**740-646-4848**

#### **POINT VILLAS**

Randall St.  
South Point, OH

**740-894-1918**

#### **SHERIDAN MANOR**

1365 Co Rd. 1  
South Point, OH

**740-377-4678**

#### **VILLAGE SQUARE APTS.**

301 S 3rd St.  
South Point, OH

**740-377-9325**

### CHESAPEAKE

**JUPITER APTS. | 950 Brown St. Chesapeake, OH | 740-867-1070**

### PROCTORVILLE

#### **PROCTORS LANDING (SENIOR HOUSING)**

7894 Co Rd. 1  
Proctorville, OH

**740-886-1300**

#### **RIVERVIEW APTS.**

21602 St Rt. 243  
Proctorville, OH

**740-886-5009**





## CHURCHES

Aid	Highway Baptist
Blackfork	Union Baptist Church
Burlington	Apostolic Church of God
Burlington	Brookdale Freewill Baptist
Burlington	Burlington Church of the Nazarene
Burlington	Burlington Macedonia Church
Burlington	First Baptist Church at Burlington
Burlington	First Pentecostal Holiness Church
Burlington	Macedonia
Chesapeake	Big Branch Church
Chesapeake	Bride of Christ Baptist
Chesapeake	Central Christian Church of Christ
Chesapeake	Chesapeake Church of the Nazarene
Chesapeake	Chesapeake Christian
Chesapeake	Chesapeake Pentecostal
Chesapeake	Chesapeake United Methodist
Chesapeake	Defender United Methodist
Chesapeake	Finley Chapel United Methodist
Chesapeake	First Baptist of Chesapeake
Chesapeake	Forrest Glen United Methodist
Chesapeake	Getaway United Methodist
Chesapeake	Greasy Ridge Church of Christ
Chesapeake	Jehovah's Witness
Chesapeake	Mt. Hope Missionary Baptist
Chesapeake	Pomaria Baptist
Chesapeake	Rockwood Baptist Church
Chesapeake	St. Ann's Catholic
Chesapeake	Sybene Missionary Baptist
Chesapeake	Union Missionary Baptist

Coal Grove	Centenary United Methodist
Coal Grove	Coal Grove Church of the Nazarene
Coal Grove	Coal Grove United Methodist
Coal Grove	Jeffersonville Missionary Baptist
Coal Grove	Main Street Freewill Baptist
Coal Grove	Myrtle Tree Missionary Baptist
Coal Grove	Sovereign Grace Missionary Baptist
Coal Grove	Zoar Missionary Baptist
Crown City	Good Hope United Baptist
Crown City	Windsor United Methodist
Decatur	Apostolic Church
Deering	Community Missionary Baptist
Deering	Ice Creek Missionary Baptist
Eureka	United Christian
Franklin Fce	Junior Furnace Missionary Baptist
Franklin Fce	St. Andrew' Reformed
Franklin Furnace	Franklin Furnace Enterprise Baptist
Getaway	Harmony Missionary Baptist
Hanging Rock	Hanging Rock Presbyterian
Haverhill	Haverhill United Methodist
Haverhill	Ohio Furnace Enterprise Baptist
Hecla	Sugar Creek Missionary Baptist
Ironton	Apostolic Gospel (Greater Faith)
Ironton	Bald Knob United Brethren
Ironton	Be Hope Church
Ironton	Calvary Baptist
Ironton	Campbell Chapel Freewill Baptist
Ironton	Central Christian
Ironton	Christ Episcopal Church



## CHURCHES

Ironton	Christ United Methodist
Ironton	Church of Christ in Christian Union
Ironton	Church of God of Prophecy
Ironton	City Mission
Ironton	Ellison Street Church of the Nazarene
Ironton	Elm Street Church of the Nazarene
Ironton	First Baptist Church of Ironton, Ohio (Storms Creek Baptist)
Ironton	First Christian Baptist
Ironton	First Church of the Nazarene
Ironton	First Presbyterian
Ironton	First Tabernacle
Ironton	First United Methodist
Ironton	Freedom Enterprise Baptist
Ironton	Gateway Baptist
Ironton	God's Holiness Mission
Ironton	Greater Emmanuel Apostolic Faith Tabernacle
Ironton	Immanuel United Methodist
Ironton	Impact Church
Ironton	Ironton Church of Christ
Ironton	Jehovah's Witness
Ironton	Johnstown Baptist
Ironton	Lorain Street Gospel Mission
Ironton	Mt. Olive Baptist
Ironton	Nazarene
Ironton	Pine Street United Methodist
Ironton	Quinn Chapel African Methodist Epls.
Ironton	Real Life Ministries Church
Ironton	Reorganized Church of Jesus Christ of Latter Day Saints

Ironton	Sedgewick United Methodist
Ironton	Sharon Baptist
Ironton	Spencer Chapel
Ironton	St. Joseph Catholic
Ironton	St. Lawrence O'Toole Catholic
Ironton	St. Paul Lutheran
Ironton	Storms Creek Missionary Baptist
Ironton	Triedstone Baptist
Ironton	West Ironton Nazarene
Kelley's Bridge	Woodland Chapel Freewill Baptist
Kitts Hill	Dog Fork Union United Baptist
Kitts Hill	Freedom Baptist
Kitts Hill	Mamre Baptist
LaGrange	LaGrange Freewill Baptist
Linville	Linville United Baptist
Macedonia	Macedonia
Pedro	Cannon's Creek United Brethren
Pedro	Decatur Missionary Baptist
Pedro	Etna Baptist
Pedro	Lawrence Furnace United Methodist
Pedro	Lighthouse Tabernacle Apostolic Church of God
Pedro	Mt. Calvary Freewill Baptist
Pedro	Mt. Olive Enterprise Baptist
Pedro	Oakland Chapel United Brethren
Pedro	Pleasant Valley Missionary Baptist
Pedro	Slabfork Centenary United Methodist
Pedro	Warneke Baptist
Pedro	Zoar Pentecostal
Pine Grove	Pine Grove Freewill Baptist



# CHURCHES

Pine Grove	Royersville Missionary Baptist	South Point	First Southern Baptist of S. Point
Pine Grove	St. Mary's Catholic	South Point	Freedom Enterprise Bapt. -S. Point
Proctorville	Abundant Life Baptist	South Point	Leatherwood Baptist
Proctorville	Bethel United Methodist	South Point	Leatherwood Missionary Baptist
Proctorville	Beulah Baptist	South Point	Sheridan Enterprise Baptist
Proctorville	Fairland Southern Baptist	South Point	Sheridan Freewill Baptist
Proctorville	First Baptist of Proctorville	South Point	Sheridan United Methodist
Proctorville	Lucinda United Baptist	South Point	Solida Missionary Baptist
Proctorville	McKinley Chapel United Baptist	South Point	South Point Christian
Proctorville	New Hope United Methodist	South Point	South Point Church of Christ
Proctorville	Pine Grove Missionary Baptist	South Point	South Point Church of the Nazarene
Proctorville	Rome Church of Christ	South Point	South Point First Baptist
Proctorville	Rome Presbyterian	South Point	South Point United Methodist
Proctorville	Rose of Sharon Baptist	South Point	Sunrise Church of the Nazarene
Proctorville	Sanctuary of Grace	South Point	Tri-State Baptist Temple
Proctorville	Scottown United Methodist	Thurman	Marion Aid United Methodist
Proctorville	Union United Brethren	Union Landing	Ohio Baptist
Scottown	Center Point Church	Warneke	Wayside Chapel Mennonite
Scottown	Gibson Chapel M.E.	Waterloo	Forrest Ridge
Scottown	Grand Valley Missionary Baptist	Waterloo	Macedonia Missionary Baptist
Scottown	Mt. Pleasant Regular Baptist	Waterloo	Midland Missionary Baptist
Scottown	New Valley Missionary Baptist	Waterloo	Palestine Missionary Baptist
Scottown	Perkins Ridge Missionary Baptist	Waterloo	Rehobeth
South Point	Berea Baptist	Waterloo	Waterloo United Methodist
South Point	Burlington Baptist	Waterloo	WOW Ministries
South Point	Burlington United Methodist	Wilgus	Fairview Missionary Baptist
South Point	C-3 Church	Willow Wood	Myrtle Ridge Missionary Baptist
South Point	Cornerstone Bible	Willow Wood	New Zion Baptist
South Point	First Baptist of Sheridan	Willow Wood	Symmes Valley Freewill Baptist
South Point	First Southern Baptist of S. Point		





## LEGAL SERVICES

### **SOUTHEASTERN OHIO LEGAL SERVICES SEOLS**

800 Gallia Street, Suite 700  
Portsmouth, OH 45662

**740-354-7563 - or- 1-800-837-2508**

**[www.seols.org](http://www.seols.org)**

### **VINE-VICTIM INFORMATION AND NOTIFICATION EVERYDAY**

**1-800-770-0192**

**[www.vinelink.com](http://www.vinelink.com)**

### **SOUTH OHIO TASK FORCE ON DOMESTIC VIOLENCE**

2315 Grant Street  
Portsmouth, OH 45662

**800-570-1819**

### **FAMILY & YOUTH LAW CENTER**

**614-236-6730**

### **NON-EMERGENCY LAWRENCE COUNTY SHERIFF**

**740-532-3525**

**EMERGENCY POLICE & SHERIFF  
9 - 1 - 1**



## GLOSSARY OF TERMS

### **ABANDONED CHILD**

A child is presumed abandoned when the child's parents have failed to visit or maintain contact with the child for more than 90 days, regardless of whether they have resumed contact after the 90-day period.

### **ABUSE**

Legal determination that the child has been a victim of conduct by another that the court determines to be physical/ sexual/emotional abuse, and that the circumstances warrant court intervention.

### **ADJUDICATION**

A fact-determining decision made by the court. The court finds that the alleged facts stated in a complaint are valid and support a determination that the child is abused, neglected, dependent, delinquent, or unruly.

### **CLERK'S OFFICE OF JUVENILE DIVISION**

Processes complaints and motions on cases involving parentage, custody, abuse, neglect, dependency, delinquency, and unruly cases.

### **COURT ORDERED PROTECTIVE SUPERVISION (COPS)**

A disposition in which the agency is ordered by the court to supervise and assist a family with compliance on their case plan and maintain the safety of child(ren) in their own home.

### **DELINQUENT**

A legal status of a child who is determined by the court to be in violation of criminal laws or juvenile status laws (i.e., school truancy, curfew, unruly, etc.).

### **DEPENDENCY**

A legal determination that a child's circumstances warrant court intervention, not necessarily due to caregiver's action or inaction.

### **DISPOSITIONAL HEARING**

A court hearing on a complaint or motion in which the court decides on whether to issue orders for custody or supervision to an individual or agency.

### **EMERGENCY CUSTODY ORDER (ECO)**

An emergency custody order issued by the court based on a complaint or motion that alleges facts that demonstrate a child to be at imminent risk of harm.



# GLOSSARY OF TERMS

## **EX PARTE**

With respect to or in the interests of one side only or of an interested outside party.

## **GUARDIAN AD LITEM (GAL)**

Guardian appointed by Juvenile Court to represent and protect the best interests of an alleged or adjudicated abused, neglected, and dependent child.

## **GROUP HOME**

A public or private facility which provides placement services for children, licensed, regulated, approved, and operated under the direction of the Ohio Department of Job and Family Services, the Ohio Dept. of Education, local boards of education, Ohio Dept. of Youth Services, or county boards of mental health or county boards of mental retardation and developmental disabilities.

## **GUARDIAN**

A person, association, or corporation that is granted authority by a probate court pursuant to Chapter 2111 of the ORC to exercise parental rights over a child to the extent provided in the court's order and subject to the residual parental rights of the child's parents.

## **INTERIM REVIEW**

A hearing held by the court to review case plan progress and status of temporary orders as scheduled/requested by the court. Kin – Individuals related by blood or adoption to include parents, grandparents, aunts, uncles, nephews and nieces, cousins, stepparents, spouse, and any non-relative who is the current custodial caretaker or has a long-standing relationship with a child.

## **LEGAL CUSTODY**

A status vesting in the custodian the right to have physical care and control of the child and to determine where and with whom the child shall live, and the right and duty to protect, train and discipline the child and to provide the child with food, shelter, education and medical care, all subject to any residual parental rights, privileges, and responsibilities.

## **LEGAL FATHER**

A man is legally presumed to be the father if he is married to the mother at the time of the child's birth. If not, a man can be declared the legal father through the process of establishing paternity through the Child Support Enforcement Agency administrative procedures.

## **NEGLECT**

A legal determination that, because of parent/caregiver action or inaction, the child is abandoned, lacks adequate parental care, subsistence, education, medical or surgical care or treatment, or other care necessary for the child's health, morals, or well-being.

## **PERMANENT CUSTODY – (PC)**

(aka Termination of Parental Right - TPR) – A final disposition by the court in finding that parental rights should be terminated, and the child should be placed in FCCS custody for the purpose of adoption.

## **PERMANENT PLANNED LIVING ARRANGEMENT (PPLA)**

An order of a juvenile court that grants legal custody of a child to FCCS without the termination of parental rights, that permits the agency to make an appropriate placement of a child.

## **PUTATIVE FATHER**

A man that is identified as being a possible father of a child but has not been determined to be the "legal father."

## **TEMPORARY COURT ORDER (TCO)**

Dispositional custody alternative in which the court orders a child to be placed in temporary custody of the agency, or an individual, for a limited period.

## **TEMPORARY ORDER OF CUSTODY (TOC)**

A pre-dispositional custody order made by the court that places a child in the agency custody, or an individual's custody, pending the adjudication of the complaint.

## **TEMPORARY ORDER OF PROTECTIVE SUPERVISION**

A pre-dispositional order made by the court in which a child remains in parental custody while the agency is ordered to supervise and assist the family.

## **UNRULY**

An offense committed by a child who is determined by the court to be non-compliant with the rules of home, school, or community.



LAWRENCE COUNTY  
**WHOLE CHILD**

LAWRENCECOUNTY.ORG



SCAN ME